
SMTP Authentication Configuration- Eudora

1. Open Eudora.
2. Select **Personalities** tab at the bottom left side of the screen (see Figure 1).

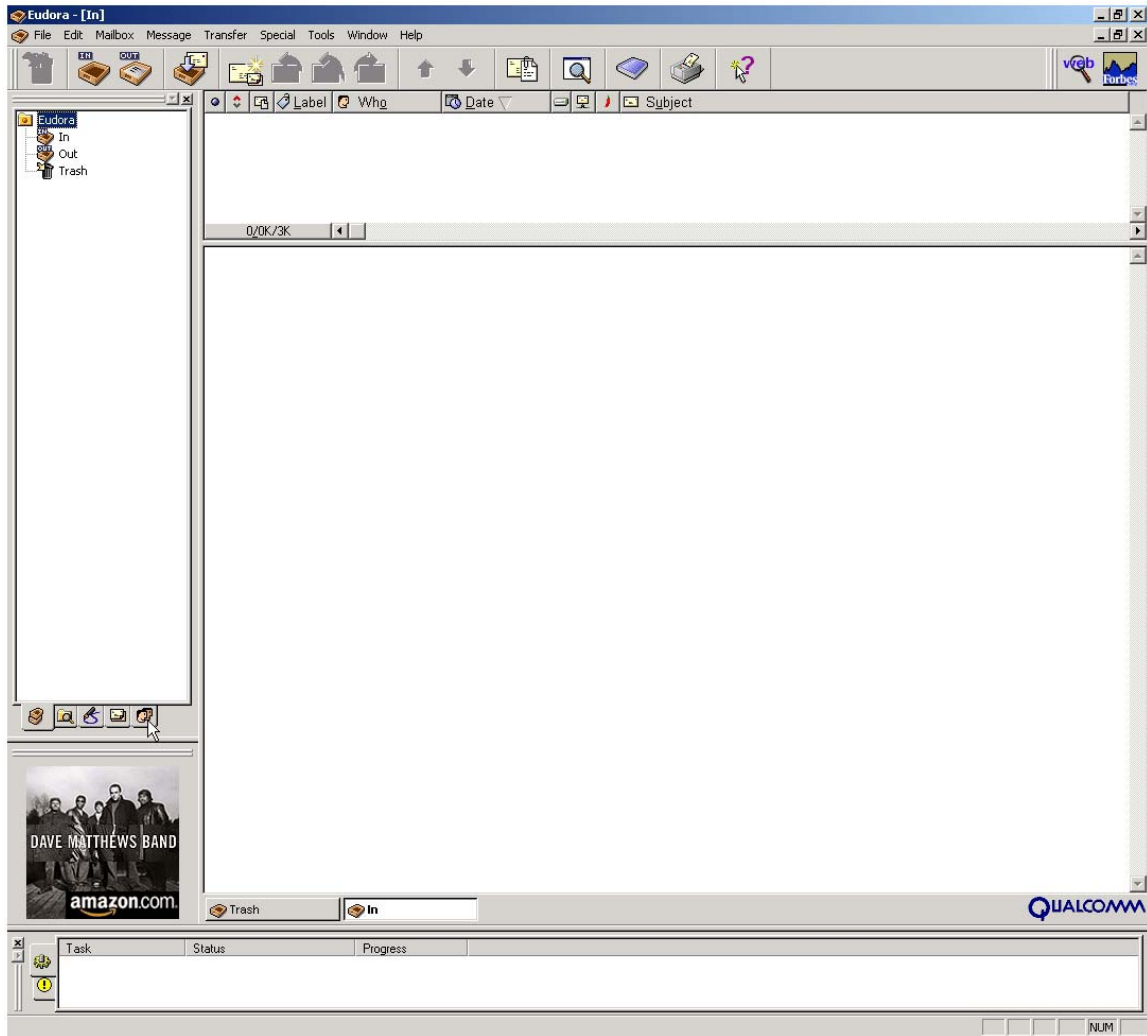


Figure 1

3. Right-click on the mail personality to modify (see Figure 2).

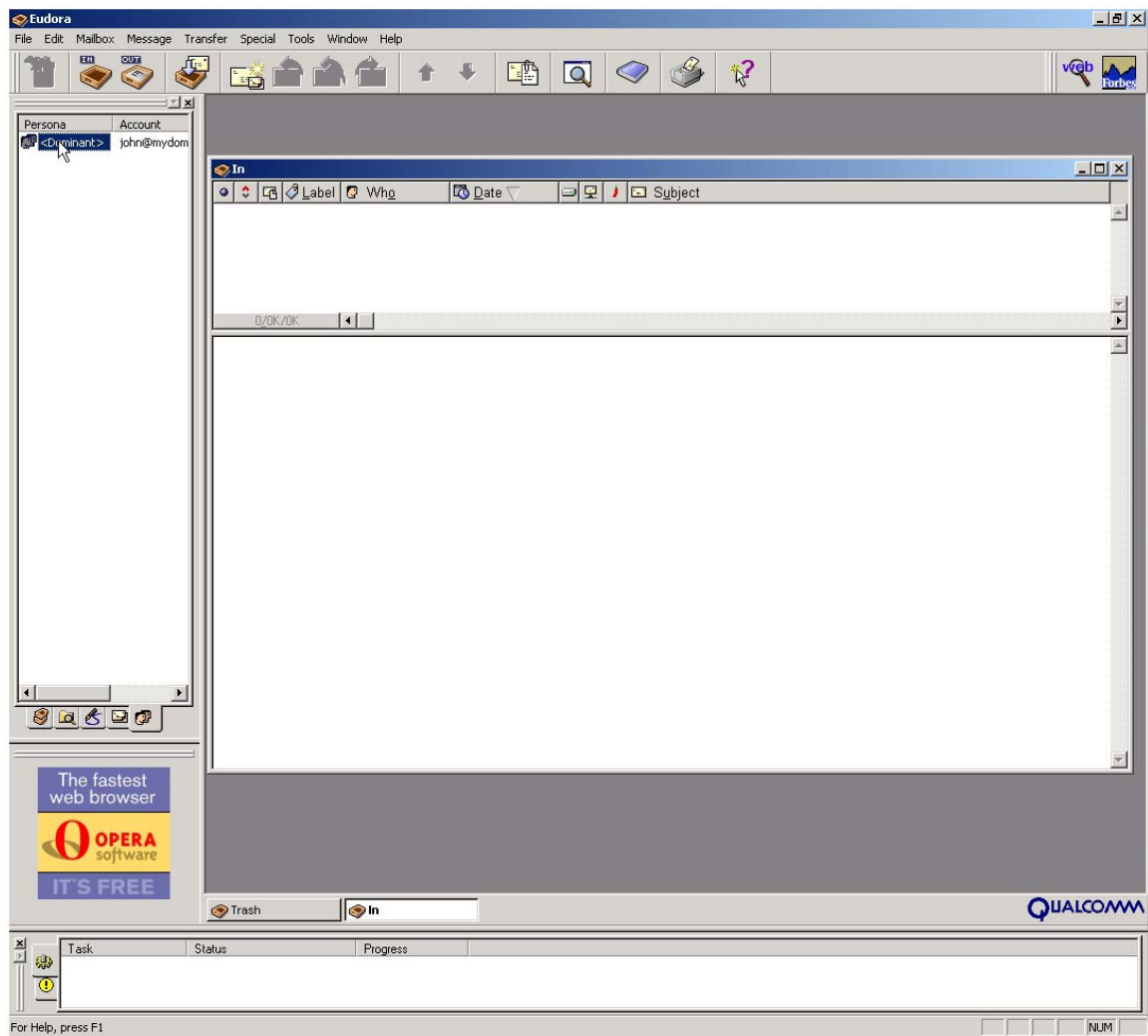


Figure 2

4. Select **Properties** from the list (see Figure 3).

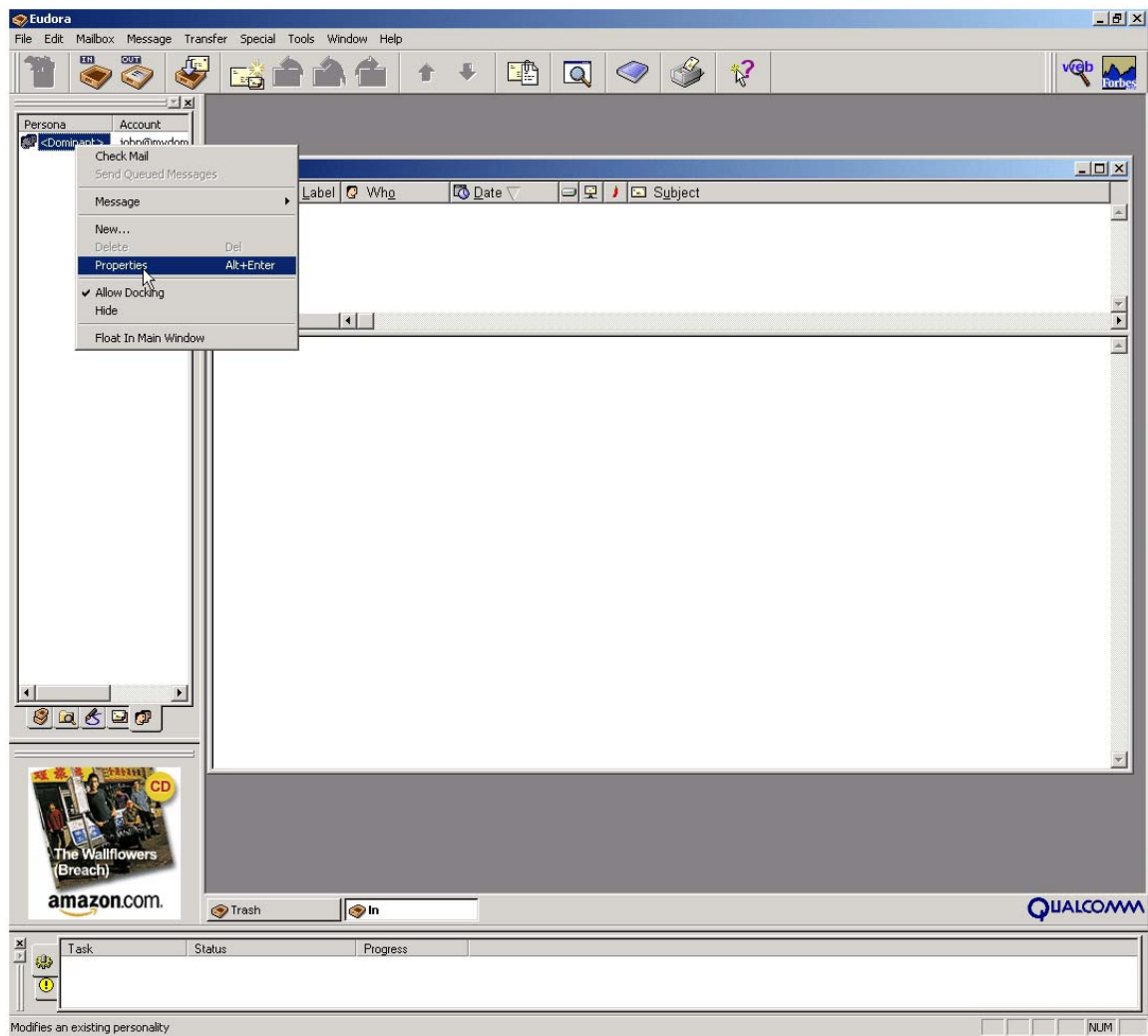


Figure 3

-
5. Check the box next to **Authentication allowed** (see Figure 4).

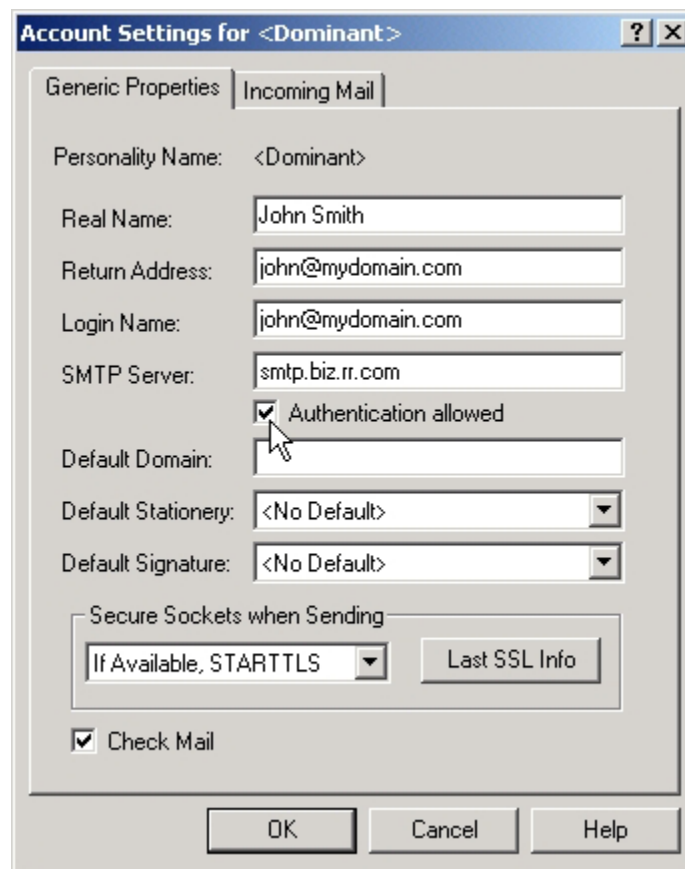


Figure 4